

Pacific Textile Arts Textile Collection  
JAPAN page 1

PACIFIC TEXTILE ARTS TEXTILE COLLECTION

March 16, 2018 and Oct. 2020

Code: J = Japan in general

K = Kimono

SK = Short Kimono or coat

P = Mompe (womens work pants)

V = Vest

A = Ainu

O = Obi

F = Fabric (misc., not made up)

FIK = Ikat / Kasuri

FSH = Shibori (including shinshi)

FSP = Stenciled (paste resist, including stencils)

FS = Stitchery

M = MISCELLANEOUS



Mari Yamaguchi  
Folding Kimono in  
the PTArts Collection

KIMONO



JK1 “Kimono” – woman’s garment, “Yuzen”  
handpainted silk. Full length, with detail of crest  
at shoulders and bird (phoenix?) at bottom  
From Richard Kilday.



Pacific Textile Arts Textile Collection  
JAPAN page 2



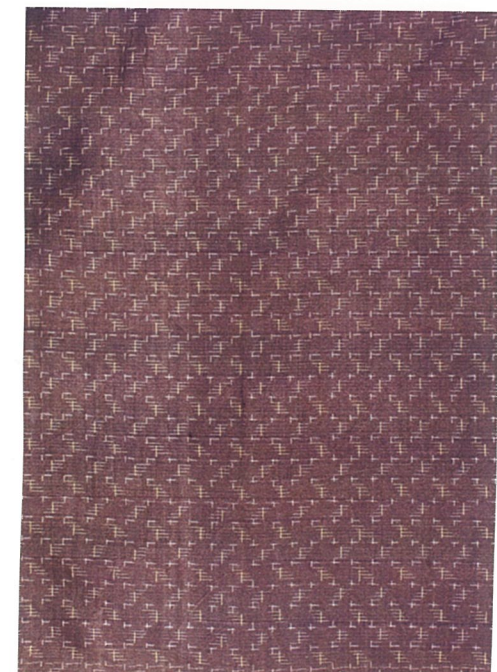
JK2 “**Kimono**” – woman’s garment,  
full length. Printed? Ikat/kasuri  
Silk  
Meisen style 1920 – 1950



JK3 “**Kimono**” – woman’s garment,  
full length. Printed? Ikat/kasuri  
Silk  
Meisen style 1920 – 1950  
From Lolli



JK4 “**Kimono**” woman’s brown  
with tiny warp and weft ikat.  
Silk From Jan Janeiro 2017

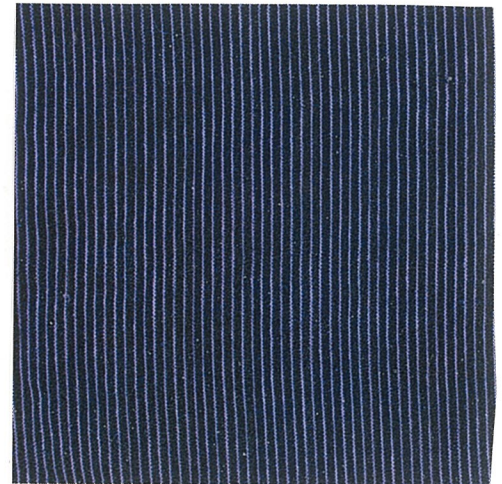




JK5 “Kimono” – woman’s garment, full length. Weft ikat/kasuri Cotton. Winter garment. From Lolli



JK6 “Kimono” – man’s “at home” garment, full length. Padded cotton. Indigo and white stripes. From Lolli



JK7 Purple kimono from Jill Hannum, 2016. Silk “The Japanese Kimono I bought in 1976 in Fresno from an ex-soldier who brought it back after WWII. The blue/purple was unfaded then, but its years as a display piece on my bedroom wall faded it—indicating, perhaps that the dye was natural, which might give a clue to its age? The embroidery is subtle, but very nice.”



SHORT KIMONO / HAORI



**JSK1 Short (3/4) Woman's over coat or Raincoat** purple damask Silk outside, Bright pink, red, etc. print on inside. Photo shows it inside out. Long sleeves. From Lolli



**JSK2 Short Kimono (Haori?)** Wool challis. Fake stencil print. Kumihimo braided ties. Lolli got from Emiko Gilmore, late '70's



**JSK3 Short Kimono** modified, Not original kimono style. Shibori (Tie-dyed). Purple with calico lining. Kumihimo ties. Gift to Lolli from Charlotte in Mendocino College Textile History class



**JSK4 Short Kimono (Haori?)**

Ramie. Double Ikat/Kasuri.  
Ryukyu Islands  
Lolli got from Dorothy Miller,  
1970's. She bought in Japan  
In the late 1940's, early '50's



**JSK5 Short Kimono Jacket**

Cotton. Indigo dyed double  
ikat/kasuri. Relatively new  
commercial (fly shuttle)  
fabric (sez Mari Yamaguchi)  
Gift to Lolli from  
Judy Summers. 2000's



**JSK6 Grocery Store Chain (like Safeway)**

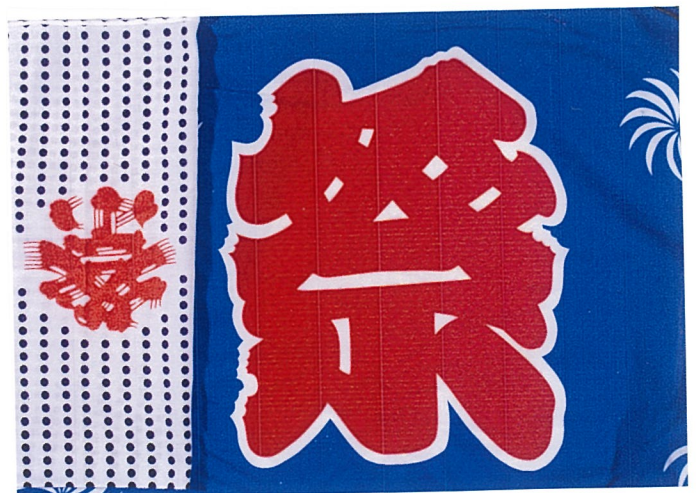
**Jacket "1590"** Black cotton, white  
(paste resist?) address and logo.  
Lolli got from Emiko Gilmore, 1970's



JSK7 Jacket Cotton,  
stencil paste resist  
and indigo.  
Not Japanese style.  
Mari Yamaguchi not  
even sure its  
Japanese (possibly  
Minority Chinese?)



JSK8 Special Event Jacket Cotton,  
With belt & bandana



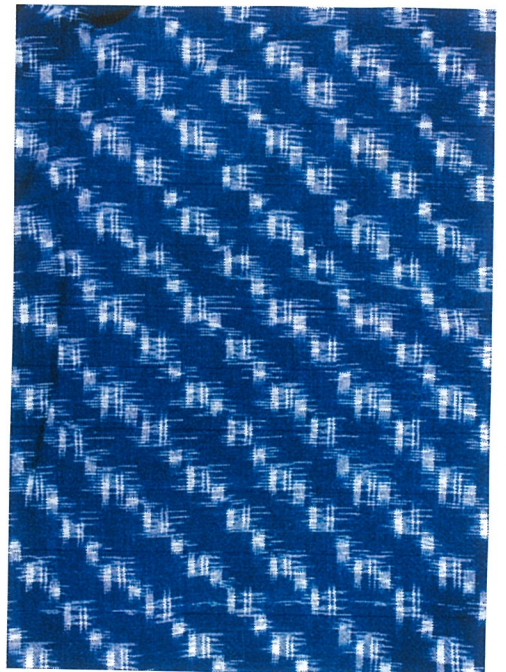
**JP1 “Mompe” woman’s work pants.**

Indigo dyed Cotton.  
Double ikat/Kasuri.  
Large diamond design.  
Gift to Lolli from  
Emiko Gilmore, late 1970’s.



**JP2 “Mompe” woman’s work pants.**

Indigo dyed Cotton.  
Double ikat/Kasuri.  
Small crossing design.  
Gift to Lolli from Emiko Gilmore,  
late 1970’s.



Pacific Textile Arts Textile Collection  
JAPAN page 8



JV1 “Farmers Vest” stitched  
“Sashiko” / “Kogin” cotton  
Panel down back  
Indigo dyed & natural white  
commercial cotton.  
From Barbara Woodward  
estate 2016. Lolli saw an  
exact same one at the 2017  
Tribal and Textile Arts Exhibit  
in John Ruddy’s booth 2012.  
sold to Ruth Anderson for \$1,200







**JA1 Ainu Sword Holder?**

Elm or linden fiber and cotton with chain stitch  
“flaps” at the bottom of the woven strap.  
Hokkaido, the Northern Island in Japan.  
From the Barbara Woodward estate 2016



**JA2 Miniature “Ainu” coat made  
of printed paper (the closest  
Lolli could afford to a true Ainu  
Coat) bought at a Thrift Store**





JO1 **“Saki ori” rag woven obi (Kimono Belt) piece.**  
Silk kimono rags.  
Purchased by Jane Austin Harris in Japan, 1990's 58" long, 8 ½ inch wide



JO2 **“obi” fragment “Saki ori” (rag woven)**  
Weft predominant weave  
Of Silk rags from recycled Kimonos



JO3 **“obi” fragment “Saki ori” (rag woven)**  
Weft predominant weave  
Of Silk rags from recycled Kimonos



**JO4 Piece from an Obi?.**

Silk. Interesting weave with special cotton thread covered in gold leaf says Mari Yamaguchi. Embroidered flowers. 12 x 104 inches. Lined. Lolli bought at the Humane Society Thrift Shop, Fort Bragg, 9/2000 for \$2.50 "As is". Stained



**JO5 Obi. silk?**  
Double faced weave.  
Chrysthanamums?  
Donated by Pat Moore, Fall 2018



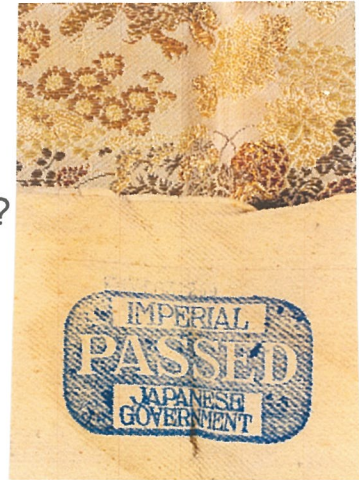
**JO6 Long Silk Indigo dyed Man's Obi with Shibori (Tie dye) ends with dancing frogs made from the knots.**  
From Susan Maresco winter 2018



**JAPANESE FABRICS**



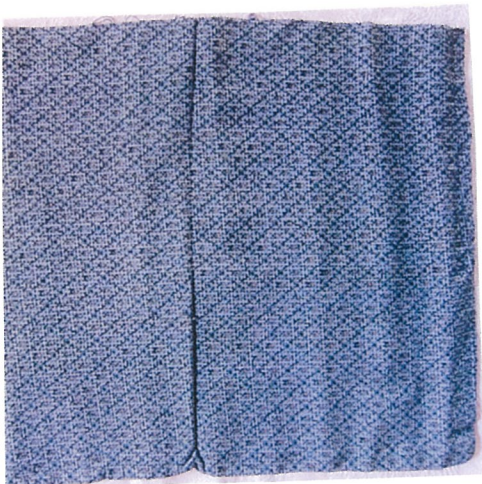
**JF1 Brocade woven silk**  
Stamped "Passed.  
Imperial Japanese  
Government"  
From WWII occupation time?  
25 X 26 Inches.  
Gift to Lolli from Charlotte,  
Mendocino College  
Textile History Class  
2007?



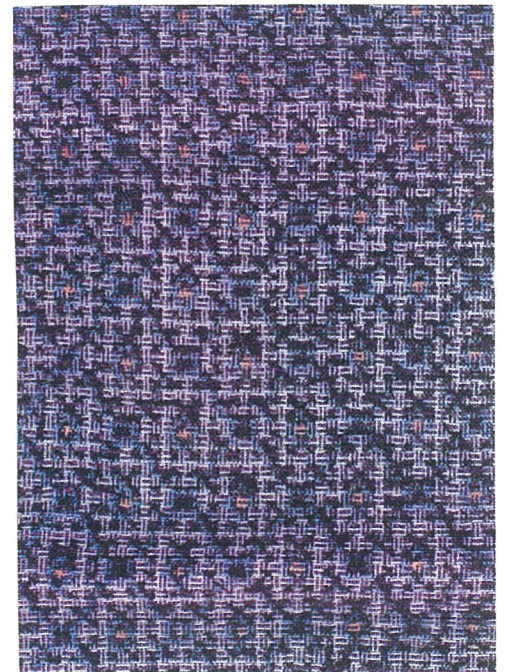
**IKAT / KASURI (IK)**

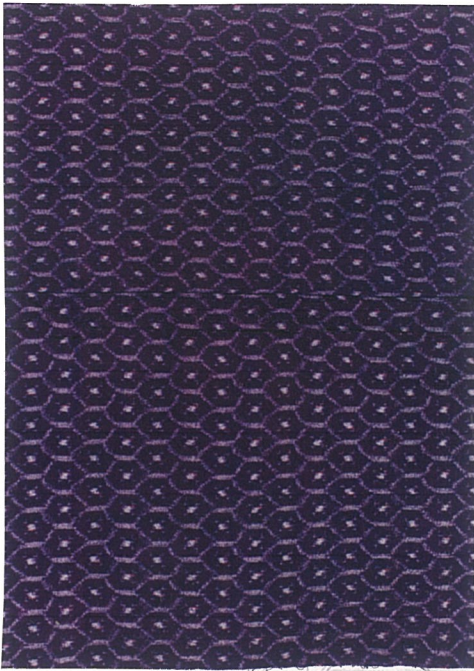


**JFIK1 Weft Ikat/Kasuri  
piece. 13 inch square.**  
Cotton, indigo dyed.  
Turtle and bird,  
and diamond  
in circle design.

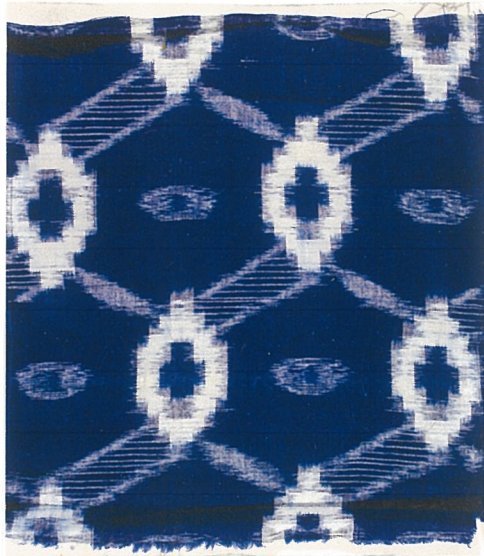
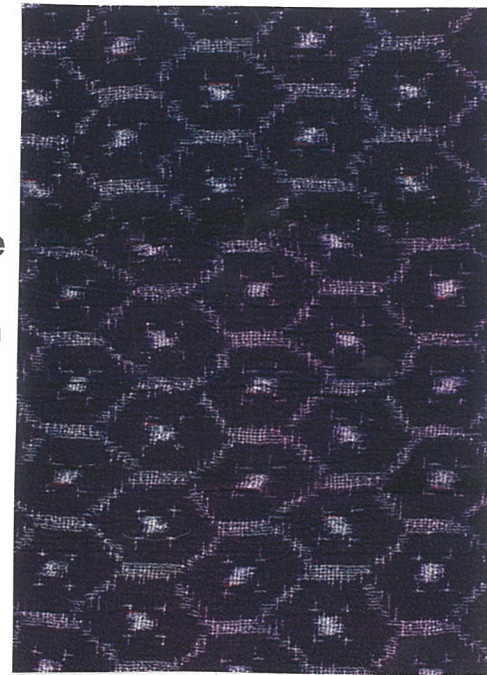


**JFIK2 Kimono sleeve piece.**  
12 x 14 inches (doubled)  
Cotton.  
Double ikat / Kasuri.  
"Mosquito" tiny design

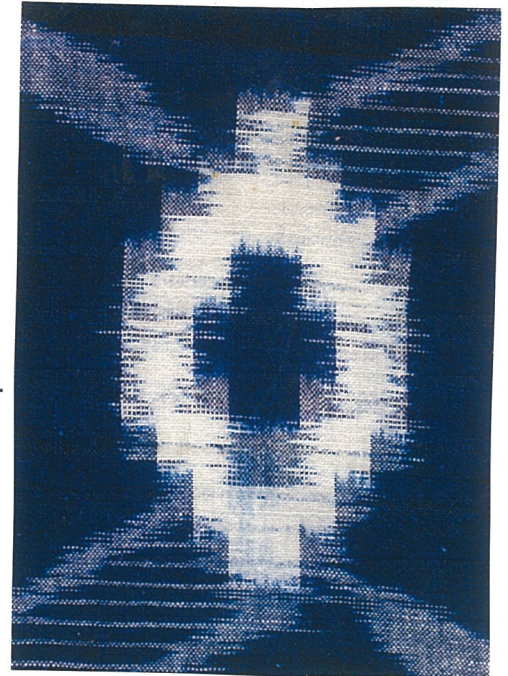




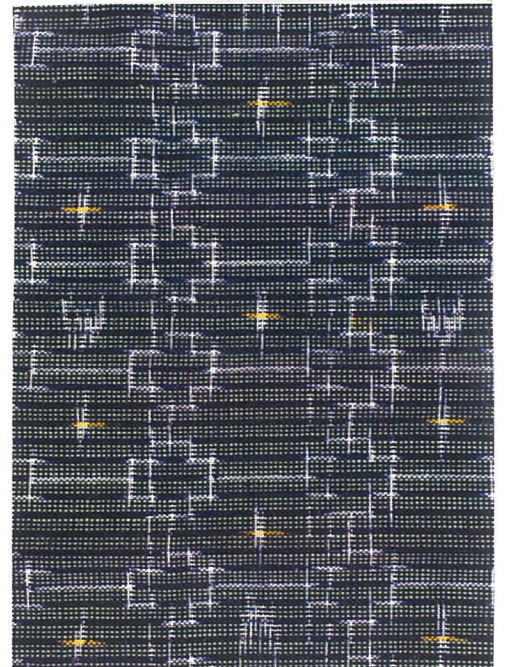
**JFIK3 Double Ikat / Kasuri piece**  
seamed. 20 X 24 inches  
Silk crepe. Black & white with  
1 red thread at center of  
6 sided ovals. Shows weft  
shifts at selvedge.  
Lolli got from Emiko's bales  
of Kimono scraps, late 1970's



**JFIK4 Double Ikat / Kasuri**  
**piece.** Cotton,  
indigo & white.  
13 inch square  
Stepped diamond design.  
Shows weft shifting at  
the selvedge



**JFIK5 Double Ikat / Kasuri**  
**piece.** Cotton.  
12 X 14 inches  
Black and White  
with occasional  
orange warp threads  
Flying birds in weft ikat  
Geometrics/rectangles  
In double (warp & weft)  
Ikat/Kasuri



**JAPANESE SHIBORI (SH)**  
**(Tie Dye, Stitch Dye, Clamp Dye)**

**JFSH1 Stitched Shibori Indigo dyed Bag**

12 X 14 inches. Lolli got from Jackie Wollenberg or Holly Brackmann from their 2002 trip to Japan with Yoshiko Wada. Used to store the Japanese fabric samples in the wicker trunk in the collection.



**JFSH2 Stitch resist piece**

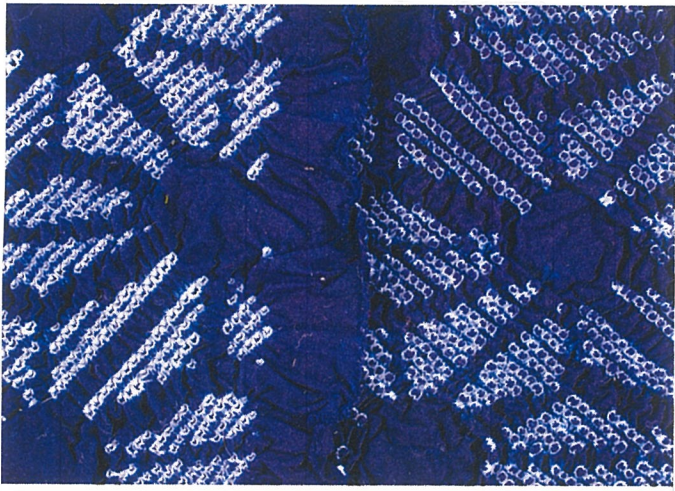
18 inch square. "Aizome"  
Indigo blue on white Cotton.  
Lolli bought in a packet of 4  
indigo dyed Japanese  
fabrics for \$25 from the  
"Yasuko" store, Healdsburg's,  
booth at Japan week,  
Mendocino Art Center,  
summer 2004





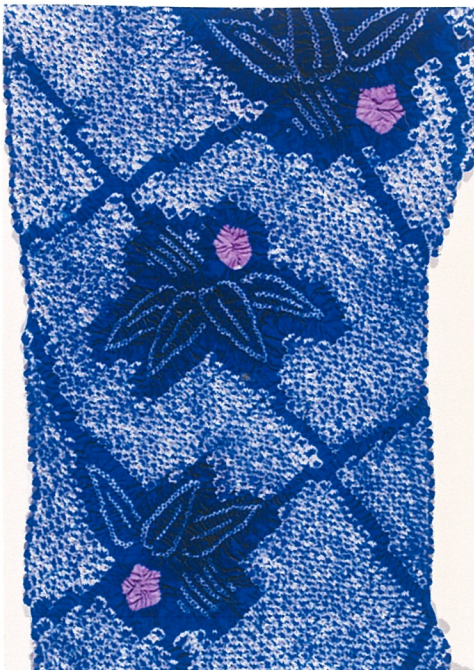
**JFSH3 Tie-dyed "Shibori" Indigo  
from Arimatsu, Japan**

Lolli purchased at Kasuri  
Dyeworks (Yoshiko & Kogi  
Wada), Berkeley, Ca. late 70's  
or early 1980's. 21 x 9 inches,  
stretches out to 13 inch wide



**JFSH4 Tie-dyed "Shibori" from  
Arimatsu, Japan.**

Lighter blue (indigo?) with  
violet spots painted on to flower  
center. Lolli purchased at Kasuri  
Dyeworks (Yoshiko & Kogi Wada),  
Berkeley, Ca. late 1970's or early  
1980's. 21 x 9 inches,  
stretches out to 13 inch wide



**STENCILED (KATAZOME)  
and/or PASTE RESIST (SP)**

JFSP1 Roll of Japanese Indigo dyed cotton with stenciled paste resist characters in white on the blue ground. Kimono width, but Mari Yamaguchi says it was made to be cut up to make wrapping cloths. 32 feet +. Purchased by Jane Austin-Harris in a shop in Sonoma, CA.



JFSP3 Japanese Indigo dyed cotton, stenciled rice paste resist cloth. 30 inches wide, 4 yards long. Water and Maple Leaf



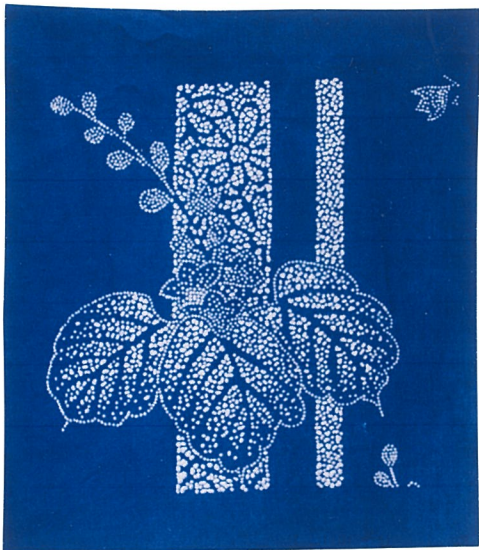


KATAZOME / STENCIL PRINT (cont.)



JFSP2 Japanese  
Sampler,  
with 4 different  
rice paste  
stenciled designs  
(Katazome)

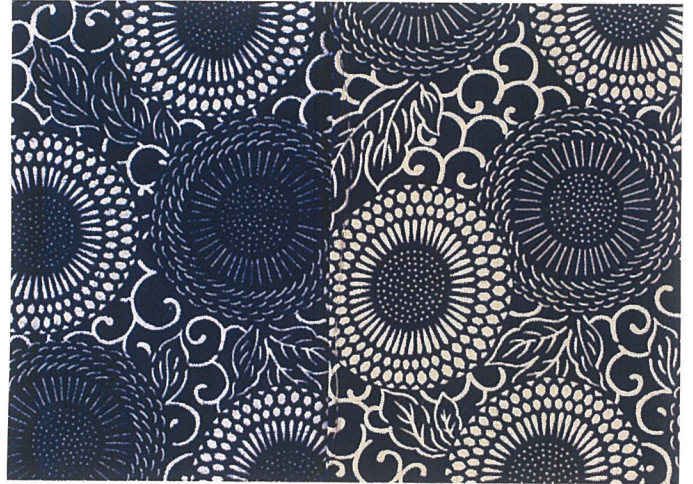
Indigo dyed cotton  
22 x 19 inches.  
Lolli paid \$20 for



KATAZOME / STENCIL PRINT (cont.)

JFSP4 2 small pieces (7 X 8 inches each)  
Stenciled rice paste resist with  
maple leaf and water design. Cotton

JFSP5 **Stencil Paste resist printed  
piece.** 12 x 21 inches Cotton,  
very dark indigo blue and white.  
(photo shows front and back)  
Commercially printed?



JFSP6 **Stencil printed zipper bag, cotton.**  
Gift to Lolli from Jackie Wollenberg from  
her trip to Japan, 2003-2?



JFSP8 **“Bingatta style”  
stenciled (or otherwise  
printed) multi-colored  
flowers and leaves on  
white cotton.** 16 x 14 in.



**KATAZOME / STENCIL PRINT (cont.)**

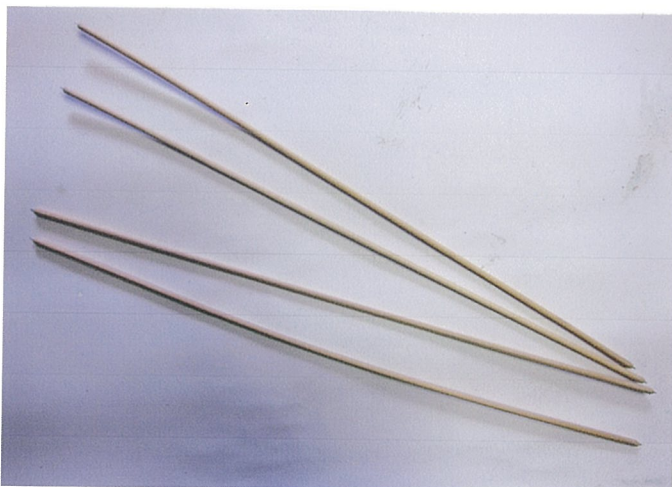
**JFSP9 “Katazome” mulberry paper stencils. Maple Leaf design**  
13 x 18 inches



**JFSP10 “Katazome” mulberry paper stencils. One stencil of a two or more color design. 13 x 18 inches**



**JM4 “Shinshi” for stretching fabric while painting or printing**



STITCHERY ( S )

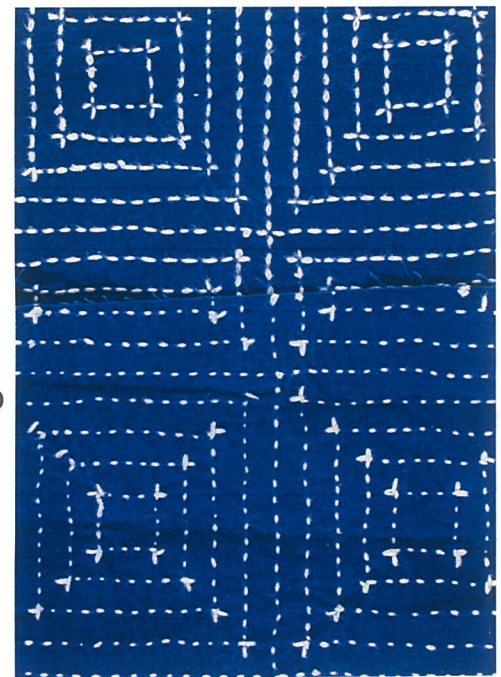
JFS1 “Sashiko” running stitch letter holder

Cotton. 11 x 15 inches  
Lolli bought at a thrift store



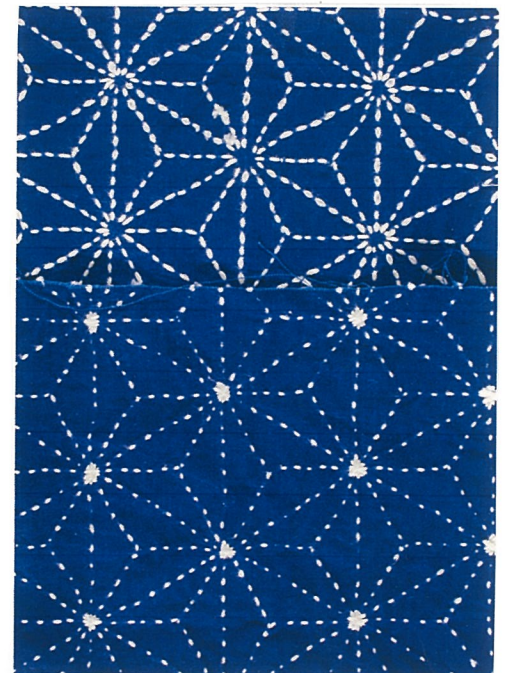
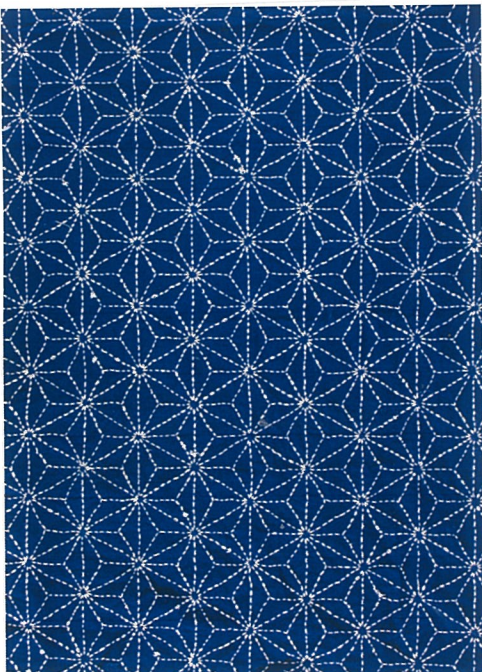
JFS2 “Sashiko” piece

Box design? 15 x 21 inch.  
Indigo blue cotton, with  
white cotton running  
stitch. Lolli bought at the  
“Yasuko” store in  
Healdsburg’s booth  
at Japan week, Mendocino  
Art Center, summer 2004  
Photo at right shows  
front and back.



JFS3 “Sashiko” piece

15 x 21 inch. Indigo blue  
cotton, with white cotton  
running stitch. Hemp leaf  
design. Lolli bought from  
the “Yasuko” store in  
Healdsburg’s booth at  
Japan week, Mendocino Art  
Center, summer 2004  
Photo at right shows front  
and back



JAPAN MISCELLANEOUS

**JM1 "Pilgrim Shoes"**  
for visiting temples.  
Linden? (John Ruddy)  
some kind of grass?  
(Mari Yamaguchi)  
Lolli bought for \$1  
at a Thrift Shop



**JM2 Bamboo Basket, Oblique plaiting, inside and out**  
From Barbara Woodward's estate



**JM3 Paper Fan Stencil Print?**  
From the Barbara Woodward estate